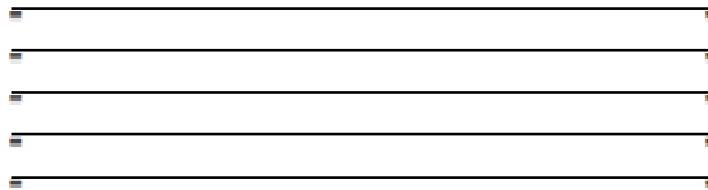


Lesson 1: The Staff

The musical **staff** is made up of five **lines** and four **spaces**.

Line 5	_____	Space 4
Line 4	_____	Space 3
Line 3	_____	Space 2
Line 2	_____	Space 1
Line 1	_____	

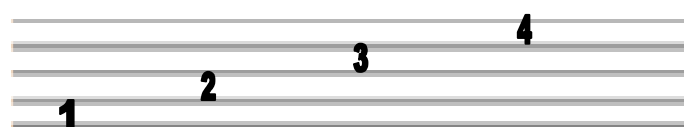
1. Practice drawing a staff by connecting the hyphens.



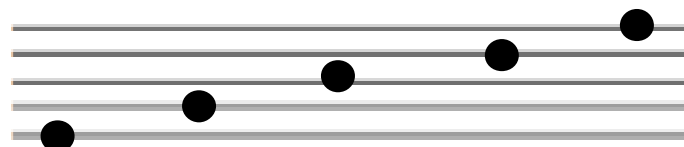
2. On this staff, number the lines from low to high.



3. On this staff, number the spaces from low to high.



4. Draw a note on each line of the staff below.



5. Draw a note on each space of the staff below.

