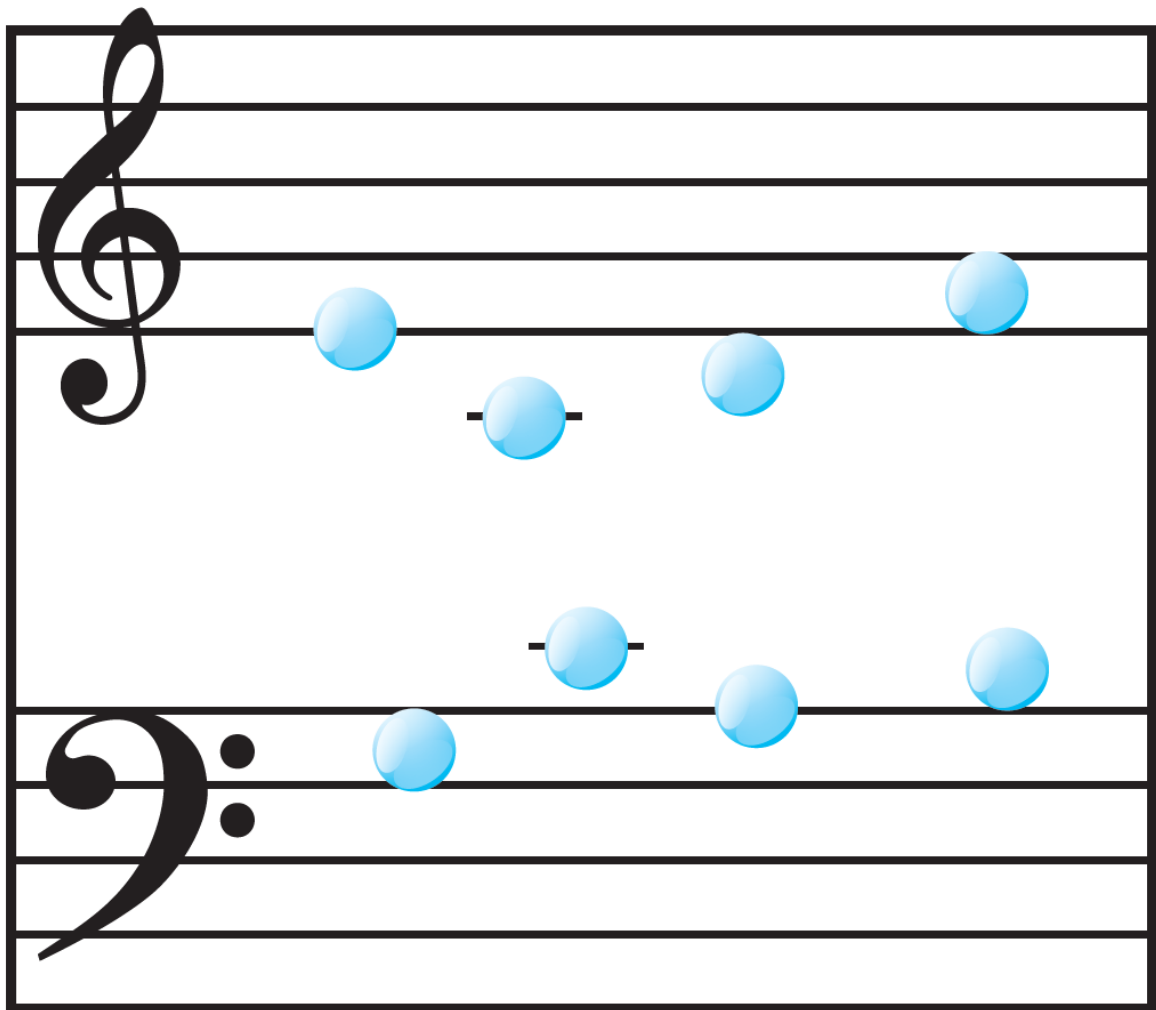


**It's raining and some of the drops  
have landed on the grand staff!**

Where did they land? Circle the note Middle C  
(MC) on both the G- and the F clef.

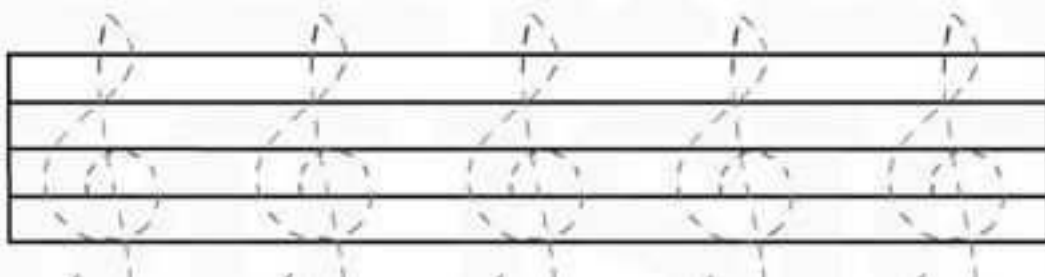




Trace the treble clefs with crayons! Let's make them rainbow colors.



Can you trace these treble clefs with a pencil?





Trace the bass clefs with crayons! Let's make them rainbow colors.



Can you trace these bass clefs with a pencil?

